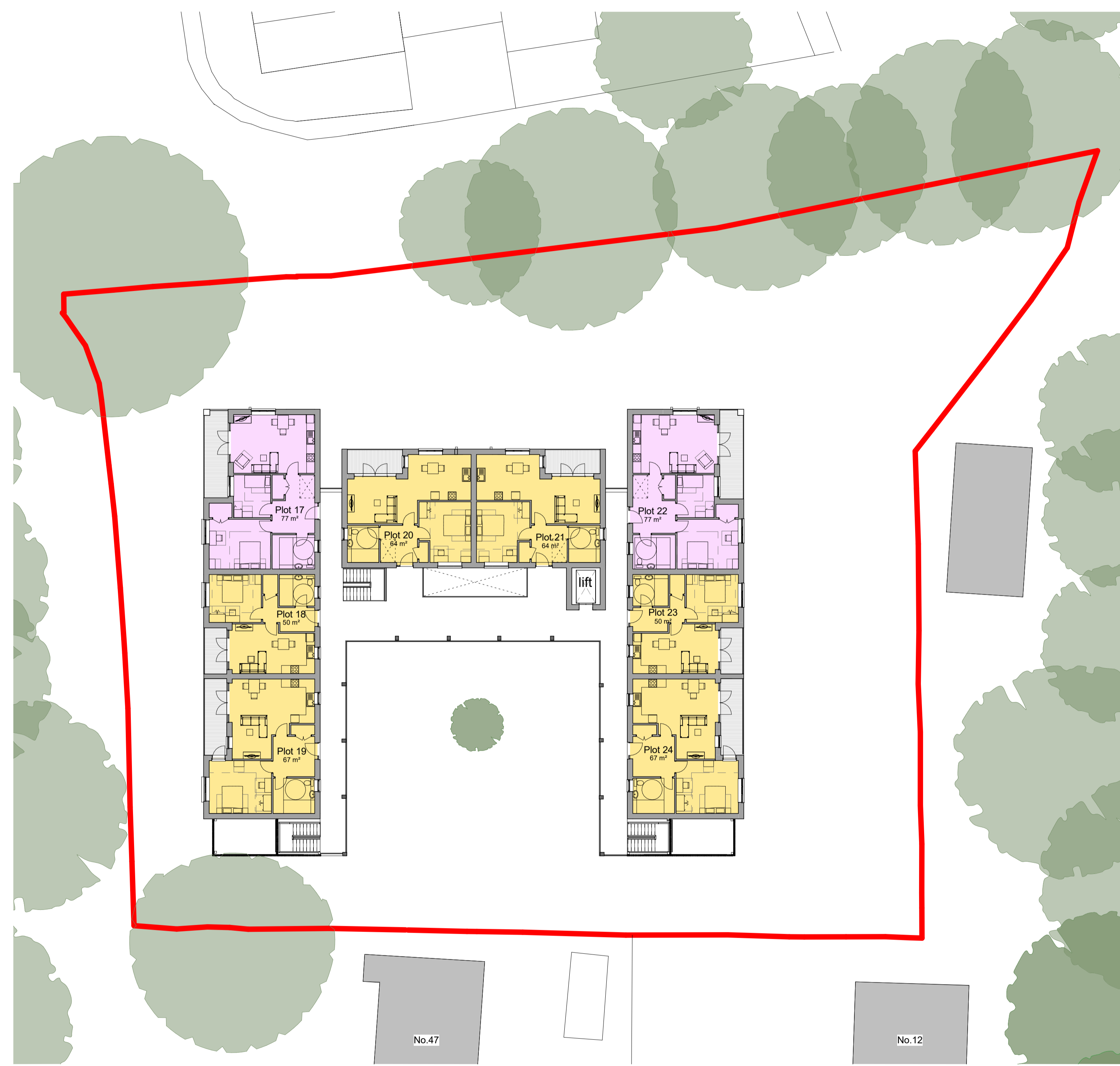


- No. Note
- All dimensions to be verified on site by GENERAL CONTRACTOR prior to any work, setting out or shop drawings being prepared.
 - © copyright SAUNDERS BOSTON LIMITED. All rights reserved. This drawing remains the property of SAUNDERS BOSTON LIMITED at all times and may not be reproduced or copied in whole or in part without their prior written consent.
 - This drawing and related specifications are for use only in the stated location.
 - This drawing is to be read in conjunction with all other Consultants drawings and specifications.
 - Drainage has not been surveyed and any/all pipe locations and below ground drainage runs are indicative.
 - It is assumed that all works will be carried out by a competent contractor who will be working, where appropriate, to an approved method statement.




	1B2P	2P3P	Total
Ground Floor	6	2	8
First Floor	6	2	8
Second Floor	6	2	8
TOTAL	16(75%)	8(25%)	24

Parking - 24(100%)

Plot	Area	Type	Location
1	61	1B2P M4(3) adaptable (Dedicated)	GF
2	50	1B2P M4(2)	GF
3	70	2B3P M4(3) adaptable(Dedicated)	GF
4	61	1B2PM4(3) adaptable (Reserve)	GF
5	61	1B2PM4(3) adaptable (Reserve)	GF
6	61	1B2P M4(3) adaptable (Dedicated)	GF
7	50	1B2P M4(2)	GF
8	70	2B3P M4(3) adaptable (Dedicated)	GF
9	77	2B3P M4(3) adaptable (Reserve)	FF
10	50	1B2P M4(2)	FF
11	67	1B2P M4(3) adaptable(Reserve)	FF
12	64	1B2P M4(3) adaptable(Reserve)	FF
13	64	1B2P M4(3) adaptable(Reserve)	FF
14	77	2B3P M4(3) adaptable (Reserve)	FF
15	50	1B2P M4(2)	FF
16	67	1B2P M4(3) adaptable(Reserve)	FF
17	77	2B3P M4(3) adaptable (Reserve)	SF
18	50	1B2P M4(2)	SF
19	67	1B2P M4(3) adaptable (Reserve)	SF
20	64	1B2P M4(3) adaptable(Reserve)	SF
21	64	1B2P M4(3) adaptable (Reserve)	SF
22	77	2B3P M4(3) adaptable (Reserve)	SF
23	50	1B2P M4(2)	SF
24	67	1B2P M4(3) adaptable (Reserve)	SF

Second Floor GA
1 : 200

No.	Revision	Date	CHK	Auth
A	Planning Issue	2022/05/04	KK	BH



Saunders Boston Architects

Eastern Gate House, 119 Newmarket Road, Cambridge CB5 8BA
T: 01223 367733
o: 01223 367733
www.saundersboston.co.uk

The Generator, The Gallery, King's Wharf, The Quay, Exeter EX2 4AN
T: 01392 346627
www.saundersboston.co.uk

Client: Uttlesford District Council

Job: Parkside, Saffron Walden

Drawing: Second Floor GA

Scale: As indicated @A1

Revision: **A**

SBA Project Code	Drawn	Date	project	originator	zone	level	type	role	number
1784	AG	11/13/20	1784	-SBA-XX-02	-DR-A	-012			

